

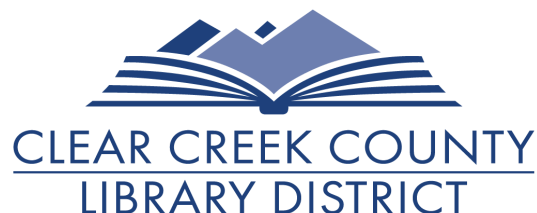


EMBERCLAW

**WELCOME TO TAILS & TALES,
YOUR SUMMER READING 2021 ADVENTURE!**

Join us for virtual crafts, book chats, visits with animal experts, and outdoor excursions! Check your calendar for the schedule.

**Please use this link to meet us for the virtual crafts and book chat sessions:
meet.google.com/dow-rduh-jbn**





6TH GRADE – 12TH GRADE

JOIN THE EMBERCLAW BOOK CHAT!

We'll meet directly after the virtual craft session on indicated weeks to discuss *A Game of Fox & Squirrels*. Email summerreading@cccl.d.org to get your free, new copy!



Week

1

ANIMAL BABIES

June 7
Monday

Begin tracking
reading minutes
and bingo cards
today!

June 9
Wednesday

Virtual
Pet Meet & Greet
10:30 am

June 10
Thursday

Virtual Craft
3 pm

2

AMAZING ANIMALS

June 17
Thursday

Virtual Craft
3 pm
Book Chat
3:45 pm

3

VET SCHOOL

June 23
Wednesday

Virtual Visit
CSU VET SCHOOL
2:30 pm

June 24
Thursday

Virtual Craft
3 pm
Book Chat
3:45 pm

4

BATTY FOR ZOOLOGY

June 30
Wednesday

Virtual Visit
ZOOLOGIST
10:30 am

July 1
Thursday

Virtual Craft
3 pm
Book Chat
3:45 pm

5

ANIMAL HOMES

July 8
Thursday

Virtual Craft
3 pm
Book Chat
3:45 pm

6

SAFARI

July 15
Thursday

Nocturnal Hike*
7:30 pm
*email holly@cccl.d.org
to register

July 18
Sunday

Final day to
submit reading
minutes and
bingo cards!



TAILS AND TALES

The link for the virtual crafts and book chats is
meet.google.com/dow-rduh-jbn

EMBERCLAW

Week 1: Baby Animals

What's your favorite baby animal? Sea otter pups are pretty darn awesome. Their special baby fur, called lanugo, makes them so buoyant that they cannot dive. Until the pups shed their lanugo (by around 13 weeks of age), they depend completely on their mothers.



EMBERCLAW

Sea Otter Craft

Create your own, extra-fluffy otter mama and her pup!

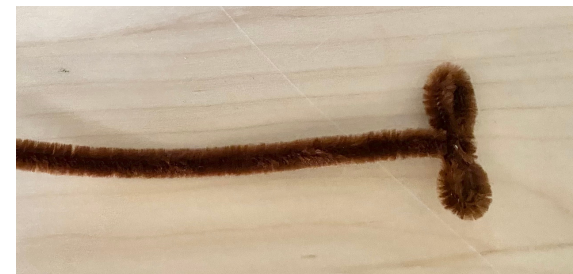


EMBERCLAW

Sea Otter Craft

HELPFUL HINT: when you glue something to the fluffy pompom, separate the fluff and push it down so you can glue the item as close to the "body" as possible.

1. Use your hot glue gun to glue the google eyes onto Mama Otter's face.
2. Glue the large black bead onto the face for her nose.
3. Bend the end of one pipe cleaner into a figure 8. Snip the figure 8 off. Repeat to make another figure 8. These will be your otter's ears.
4. Bend the figure 8 to make a right (90 degree) angle. Apply glue to one of the loops, and attach it to Mama Otter's head. Repeat with the second ear. (Can you see her otter ears in the photo to the right?)



EMBERCLAW

Sea Otter Craft

5. Now, create Mama Otter's arms. Cut your other pipe cleaner in half. Bend the ends of each half to create a little loop.
6. Apply hot glue to one of the loops, and affix the loop to Mama Otter's side. I used my tweezers to avoid coming into contact with the hot glue.
7. Repeat for the second arm.



EMBERCLAW

Sea Otter Craft

8. Glue the smaller googly eyes and black bead onto your small pompom to create your baby otter's face.
9. Add the little black pompoms for ears.
10. Apply hot glue to Mama Otter's paws, and affix Baby Otter to Mama Otter.

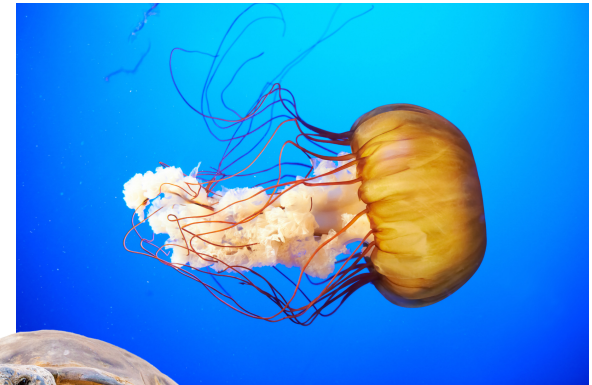
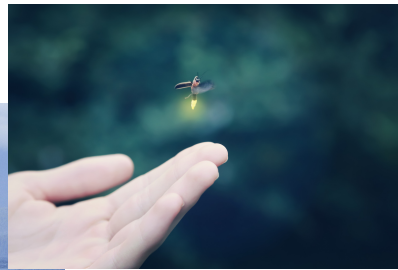


EMBERCLAW

Week 2: Amazing Animals

Blue whales. Fireflies. Boa constrictors. Snowshoe hares. Great horned owls. Jellyfish. Tortoises.

Think of how differently each of these creatures looks, moves, and interacts with the world. Biodiversity is the diversity, or variety, of life on earth. Different organisms evolved in response to different environments and circumstances.



EMBERCLAW

Build-a-Beast Activity

Join us to create your own creature! Think up special traits to help your imaginary animal adapt to its habitat. Will your creature be able to survive an environmental catastrophe?!

Grab your crayons and your Build-a-Beast packet, and join us at **meet.google.com/dow-rduh-jbn**. Or, if you can't make it to the virtual session, create your creature and email a photo of your drawing to summerreading@cccl.org – we'd love to see it!

EMBERCLAW

Week 3: Vet School

Veterinarians learn all about animals to understand how to keep them healthy and happy. In vet school, students study medicine, anatomy (animal bodies), surgery, diseases, and more.

Many vets learn how to help domesticated animals like cats, dogs, and other pets. Some vets specialize in helping farm or zoo animals.



**Weds
June 23
2:30 pm**

VETERINARIAN VISIT

Meet a real veterinarian!

Joining this virtual visit will enter you into a prize drawing!

Meet us online at meet.google.com/qsv-omvp-uvi

Clear Creek County Library District is excited to welcome Yoshua Goodman, a third-year veterinary student attending Colorado State University, for a special Summer Reading visit. Bring your questions about the path to vet school, Yoshua's typical day helping animals, and the types of animals he cares for.

Yoshua was born in Mexico and grew up in Las Vegas. He earned a degree in Pathobiology and Animal Science in 2019. His interests include small animal medicine, soft tissue surgery, and business.

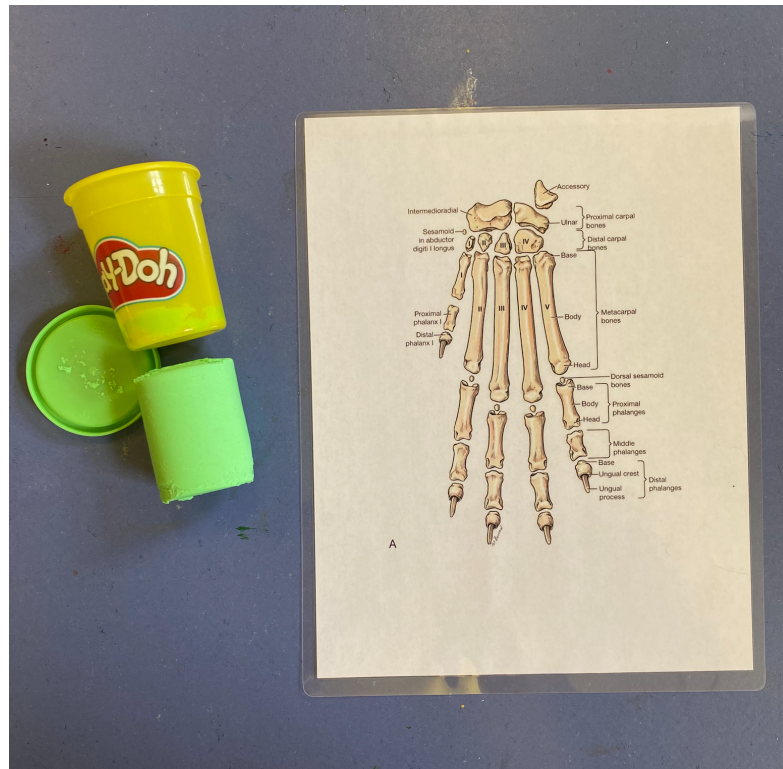
Yosh's favorite animal is one of the critters pictured at right! Can you guess which one? Come to the virtual visit to find out!



EMBERCLAW

Paw Anatomy Challenge

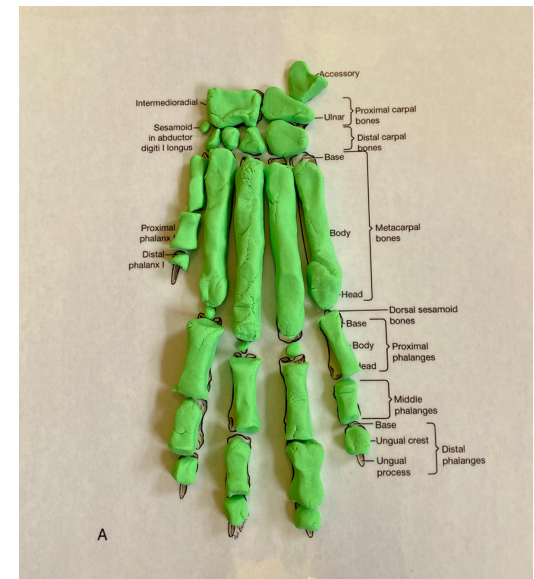
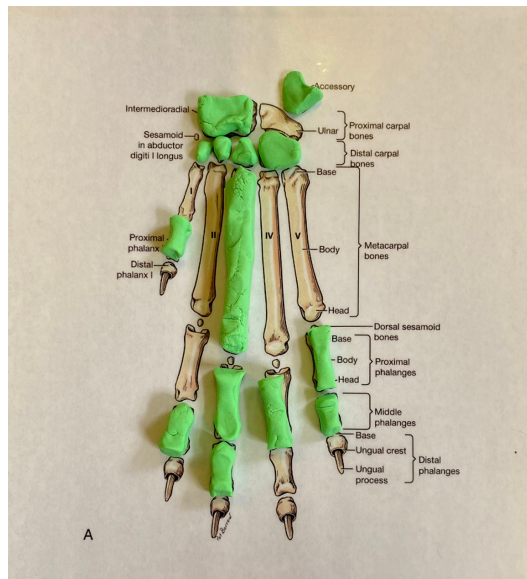
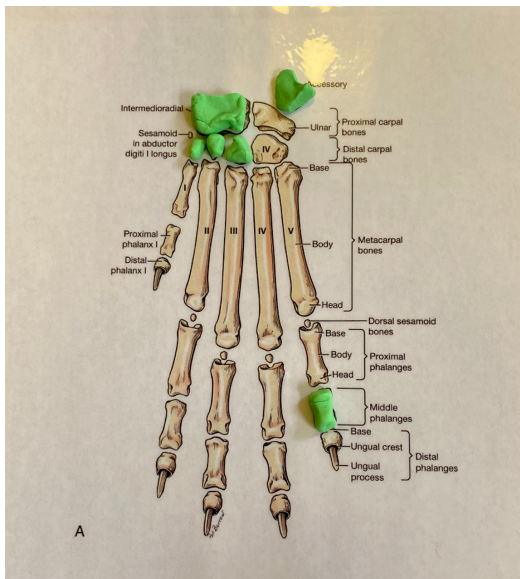
For this activity, you will need your Play-doh and your laminated diagram of a dog paw.



EMBERCLAW

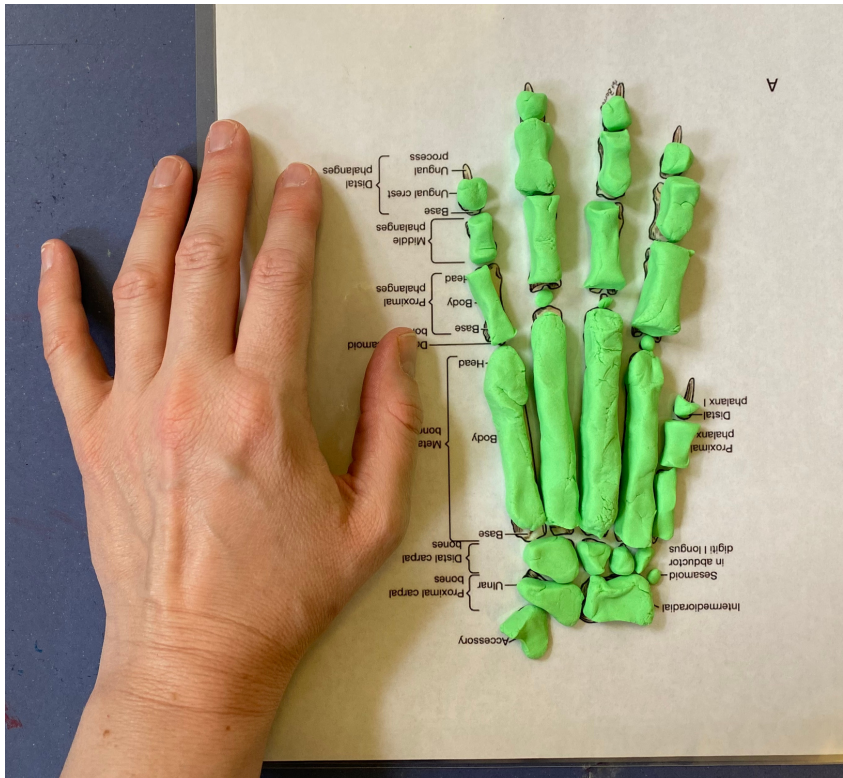
Paw Anatomy Challenge

Use the Play-doh to create all of the bones of the paw. Make sure to sculpt even the tiny ones! While you're forming the "bones", look at them closely to see how they fit together.



EMBERCLAW

Paw Anatomy Challenge



How does the paw compare to a human hand? What is similar? What is different? Look at your diagram of the bones of the human hand, too.

When you have completed your paw anatomy challenge, roll your Play-Doh into a ball and put it away. You'll need it for the Beaver Lodge challenge in Week 5.

EMBERCLAW

Week 4: Batty about Zoology

Zoologists study animals. Some zoologists observe animals in their natural habitat, and others work in zoos, aquariums, and laboratories. Would you like to travel to the rainforest to learn about sloths? Or feed a baby leopard living at a zoo?



EMBERCLAW

Flying Bat Airplane

Please find tutorial at <https://www.origami-tutorial.com/bat-paper-airplane.html>

It's kind of tricky, so feel welcome to visit Miss Holly at the library if you'd like some help!
Email her at holly@cccd.org if you would like to meet to work on your airplane together.



EMBERCLAW

Week 5: Animal Homes

Animals have all kinds of amazing homes. Some animals even build their own homes. Prairie dogs and moles dig underground tunnels and burrows. Birds build nests out of leaves, grass, sticks, mud, clay, and found, man-made objects. Paper wasps chew up wood and plant fiber to create paper nests.



EMBERCLAW

Week 5: Animal Homes

Beavers are amazing engineers. They build dams with mud, rocks, sticks, and even trees that they "chop down" by chewing along the trunk until it collapses! A dam is something that blocks or slows the flow of water in a stream or river, creating a pond behind it.

Beavers do not live in their dams. The pond created by the dam is a safe space for them to build their home, which is called a lodge. Beavers build their lodges out of twigs, sticks, rocks, and mud. They get into their lodge via an underwater entrance.



EMBERCLAW

Beaver Lodge Challenge

Can you build a beaver lodge using twigs and "mud" (Play-Doh)? You will need to collect your own sticks and twigs. Find them on the ground – please do not break them off trees or bushes! (Beavers would just help themselves, but humans have different expectations for manners and permission.)



EMBERCLAW

Beaver Lodge Challenge



1. Gather your sticks. If your sticks are especially muddy, you might want to rinse them off and let them dry overnight.
2. Tear a little "door" in one side of your paper bowl.
3. Remove your Play-Doh from the containers and roll it into a ball. This is your "mud".
4. Can you build up the walls of the beaver lodge using Play-Doh and twigs? How can you get the twigs to stick to the bowl and to each other? How much Play-Doh do you need?
5. Work your way around the lodge!
6. When you have finished covering the bowl with sticks and "mud", add a few leaves for decoration.



EMBERCLAW

Week 6: Safari

A "safari" is an expedition to find animals in their native habitat. This week, Kimberly Knox of Georgetown Outdoor Discovery will guide Emberclaws on a nocturnal hike. We'll talk about best hiking practices, learn about local animals, and maybe even share a few spooky stories!

Space is limited for this activity, so register soon! Email summerreading@ccclid.org to reserve your space.

Thursday
July 15
7:30 pm

EMBERCLAW

Week 6: Safari

Nocturnal Hike with Georgetown Outdoor Discovery

A "safari" is an expedition to find animals in their native habitat. Join us for a forest safari on Silverdale Heritage Trail with local guide, Kimberly Knox.

- **Learn best hiking practices**
- **Learn about local animals**
- **Look for tracks**
- **Enjoy fresh air and exercise**
- **Howl at the moon!**

Please email summerreading@ccld.org to register for this activity.

